



A Range to match Your every need !

ukp 
Ceramic Tiles

The logo for ukp Ceramic Tiles. It features the lowercase letters 'ukp' in a bold, dark blue font. To the right of the text is a graphic consisting of four diamond-shaped tiles arranged in a 2x2 grid. The top-left tile is light green, the top-right is light blue, the bottom-left is light brown, and the bottom-right is dark brown. Below the graphic, the words 'Ceramic Tiles' are written in a bold, black, sans-serif font.



**"QUALITY IS THE TOTALLY FEATURES
AND CHARACTERISTICS OF A PRODUCT
OR SERVICE THAT BEAR ON ITS ABILITY TO
SATISFY SEATED NEED."**



201



202



203



204



205



206



207



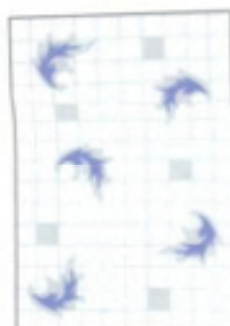
208



209



210



211



212



213



214



215



216



217



218



219



220



221



222



223



224



225



226



227



228



229



230



231



232



234



235



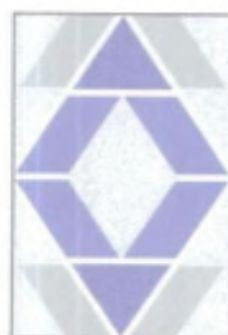
236



237



238



239



240



241



242



243



245



246



247



248



249



250



251



252



253



254



255



256



257



258



259



260



261



262



263



266



267



268



269



270



271



272



274



275



276



277



278



279



280



281



282



283



284



286



287



288



289



290



291



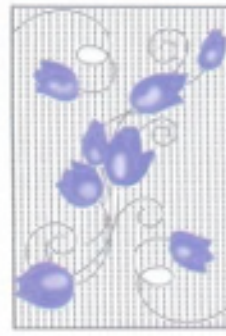
292



293



294



295



296



297



298



299



306



307



308



309



311



312



313



314



315



316



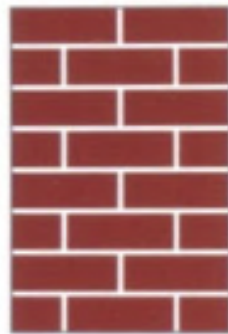
317



318



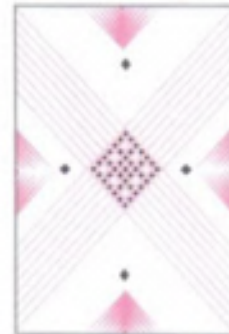
319



320



322



323



324



325



326



327



328



330



331



332



333



334



335



601



602



603



604



605



606



607



608



610



611



612



613



615



616



617



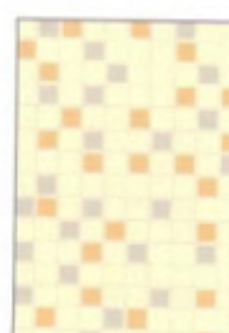
618



619



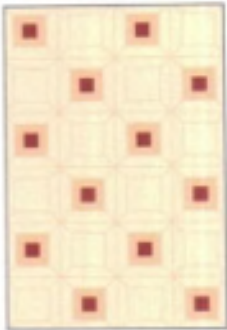
620



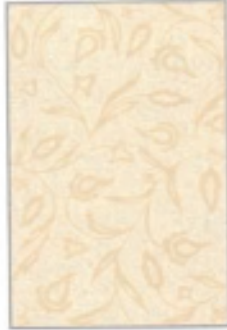
622



623



624



625



627



628



629



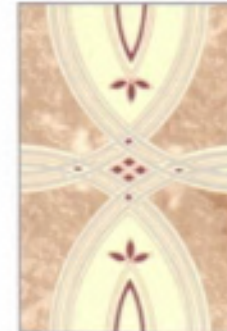
630



633



634



636



637



638



639



640



641



642



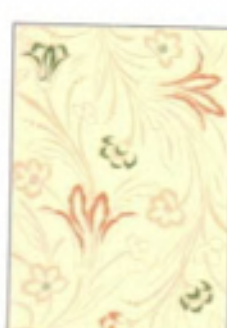
643



644



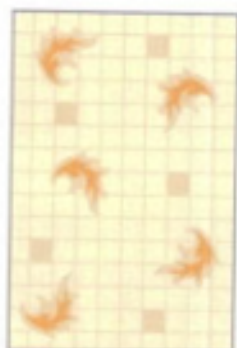
647



648



649



651



654



655



656



657



658



659



660



662



663



664



665



666



667



668



669



670



671



672



673



674



676



677



678



679



682



683



684



685



686



687



688



689



690



691



UKP Industrial Company

Corporate Office:

116 Sikka Galaxy, Shrestha Vihar, New Delhi – 110 092, India Tel: +91-11-43007461 / 64724911 Fax: +91-11-43007461

Production Unit:

8A National Highway, Lakhdhirpur Road, Morbi – 363642, Gujarat, India

Also Available Sizes : 200X300mm, 200X200mm, 250X325mm, 250X250mm
300X300mm, 400X400mm, 600X600mm

This document was created with Win2PDF available at <http://www.win2pdf.com>.
The unregistered version of Win2PDF is for evaluation or non-commercial use only.
This page will not be added after purchasing Win2PDF.